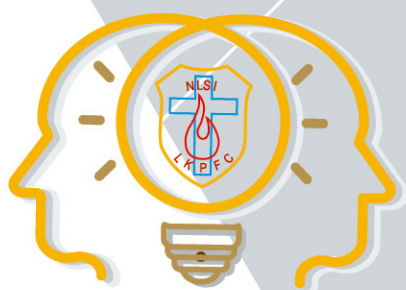




NLSI Lui Kwok Pat Fong College



Whole-person
development



2021-2024 School Theme



Embrace God's Love Enrich Our Minds

Christian Co-educational Secondary School

“ And God is able to bless you abundantly, so that in all things at all times, having all that you need, you will abound in every good work. (2 Corinthians 9:8) ”

Self-directed
learning



School Profile

2022-2023



School Introduction

School Missions

Based on the principles of the Bible, we impart subject knowledge to students and cultivate good behaviors. We aspire to make students understand the truth and the principles stated in the Bible and establish the proper values in life by helping them to accept God as the Master of their lives. We aim to enable students to have holistic development in spiritual, moral, intellectual, physical, social, and aesthetic arenas so that they will become physically, mentally, and spiritually healthy citizens who are able to distinguish right from wrong as well as act responsibly in society.

School History

Founded in 1969 on Hong Kong Island, the original name of the school was New Life School. Thanks to the donation of the Lui Ming Choi Foundation, the school was relocated to its current campus in 1985 and was renamed NLSI Lui Kwok Pat Fong College.

School Motto

Jesus Christ is the Master of New Life

School Sponsoring Body

New Life Schools Incorporation Ltd.

School Supervisor and Chairperson of IMC

Mr. Leung Yiu Kuen



Principal

Mr. Cheung Fung



Type

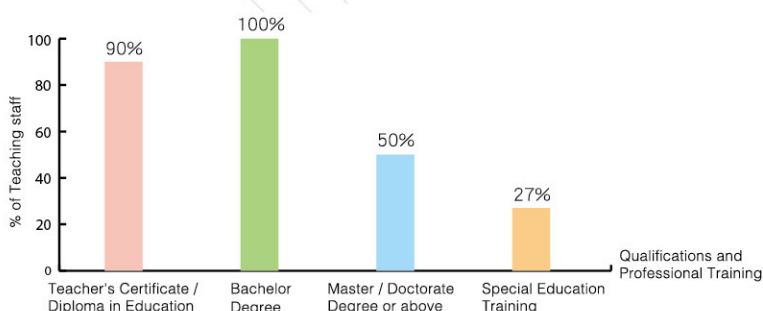
Subsidized Christian Co-educational Secondary School

Area

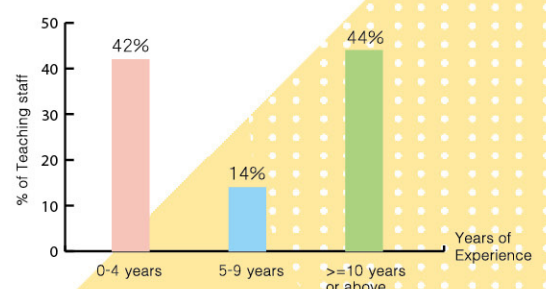
7,900 square meters

Qualifications of Teachers

(including the principal)



Experience of Teachers





School Features

We practise teaching based on Christian principles.

To develop students' skills for lifelong and self-directed learning, as well as foster their whole-person development

To foster Christian belief and growth mindset in students; to broaden their horizons in life-planning, leadership, and global view; and to strengthen their capability in connecting with oneself, others and society

- » In the Alpha Course of the Student Christian Fellowship, life issues are addressed in relaxing and lighthearted ways.
- » Student Fellowship Working Group along with S.1 teachers delivers religious studies lessons in order to motivate students to attend Student Fellowship on a regular basis.
- » Ambassador of Care Team has been set up to facilitate students to show care to and serve others in local communities and overseas.



Life Planning Education



Equip ourselves and explore pathways

» Career Live, a social simulation game and career planning programme, is organised for both junior and senior form students. It aims to help students reflect on their characters and abilities, understand their strengths and weaknesses to prepare them for further studies, for work as well as for life-long learning.

- » Mock Results Release is organised to familiarize students with the flow of the release of the HKDSE results, application and interview procedures.
- » Education Bureau has invited our school to share the outstanding results in Applied Learning with schools in Hong Kong. In addition, the press has interviewed our school on how Applied Learning is introduced and carried out in our school.
- » To broaden students' horizons and inspire them to pursue their dreams, Immersive Study Tours of local university curriculum and lives are organised.



Language Policy >>

We strive to enhance students' language competency so that they can be well-equipped to continue their learning in higher and further education.

1. Fostering a habit of using English for life-long learning and self-directed learning tools, and catering for learning diversity

- >> to conduct Language Across Curriculum (LAC) programmes through the collaboration between the English Department and departments of different content subjects with various learning experiences outside classroom so as to facilitate their learning of other content subjects in English
- >> to provide professional training for teachers to identify and support gifted students in the school by participating in Gifted Education School Network by the EDB
- >> to provide S1 Bridging Course to strengthen students' English foundation



2. Providing opportunities to showcase students' learning outcomes and to enhance their confidence in learning English

- >> to organize various English content activities like S1 English Drama Training and Competition and "Lego Serious Play" programme to provide an English-immersive environment and boost their confidence in using English
- >> to train student emcees and announcers for all ceremonies, assemblies and roll-calls
- >> to organize Global Weeks and work with international charities to expose students to different cultures through the cultural exchange with foreigners



Broaden the horizons



Subjects Offered in the 2023/2024 School Year

Key Learning Areas	Subject	S1 to S2		S3	S4 to S6
		3 EMI Classes	1 less EMI Class		
Chinese Language Education 中國語文教育	Chinese Language 中國語文	C	C	C	C
	Chinese Literature 中國文學				C
	Putonghua 普通話	P	P	P	
English Language Education 英國語文教育	English Language 英國語文	E	E	E	E
	Language Across Curriculum 跨學科英語課程	E	E	E	
Mathematics Education 數學教育	Mathematics 數學	E	C*E	E	E
	M1 數學延伸部分 (單元一)				E
	M2 數學延伸部分 (單元二)				E
Science Education 科學教育	Physics 物理				E
	Chemistry 化學				E
	Biology 生物				E
	Science 科學	E	E		
	Science 科學 (Physics, Chemistry, Biology 物理、化學、生物)			E	
Technology Education 科技教育	Information and Communications Technology 資訊及通訊科技				E
	Business, Accounting and Financial Studies 企業、會計與財務概論				E
	Computer Literacy 電腦認知	E	C	E	
	Home Economics 家政	E	C		
	Business Fundamentals 基本商業			E	
Personal, Social & Humanities Education 個人、社會及人文教育	Religious Education (Christianity) 宗教 (基督教)	C	C	C	C
	Geography 地理	E	E	E	E
	History 歷史	E	C*E	E	E
	Chinese History 中國歷史	C	C	C	C
	Economics 經濟				E
	Ethics and Religious Studies 倫理與宗教				C
	Life and Society 生活與社會	E	C	E	
	Life Education 生命教育	C	C	C	C(S4-5)
Arts Education 藝術教育	Music 音樂	E	C	E	
	Visual Arts 視覺藝術	E	C	E	C
	Aesthetic Development 藝術發展				C(S4-5)
Physical Education 體育	Physical Education 體育	C	C	C	C
Cross-key-learning Area 跨學習領域	Citizenship and Social Development 公民與社會發展科				C

Remarks :

C – Chinese Medium of Instruction 以母語教學

C*E – Chinese Medium of Instruction with English Extended Learning Activities
以母語教學，並加入英語延展學習活動

E – English Medium of Instruction 以英語教學

P – Putonghua Medium of Instruction 以普通話教學



Boost your knowledge



2022 HKDSE

- ▶ A number of students got Level 5**, 5* and 5 in different subjects. The overall percentage of Level 5 or above was higher than those of the territory.
- ▶ The overall percentage of Level 5** of the core subjects was **the highest in the recent 5 years**.
- ▶ The percentages of students attaining 3322+2 or better and attaining 22222 or better were both above the respective territory averages.

DSE Star Scholarship

The DSE Star Scholarship 2022 is established in LKPFC to award exceptionally accomplished students. This year, 13 students who achieved excellent results in HKDSE have received the award.

School Nominations Direct Admission Scheme (SNDAS)

Congratulations to 6C Chen Sze Shuen Aliese with a firm offer from School Nominations Direct Admission Scheme (SNDAS)! She got the offer of admission to **HKU BA and BEd in English (Double Degree)** before HKDSE result release. Among 776 applicants of the scheme in Hong Kong, Aliese is one of the 195 successful candidates.

"Discipline! Discipline! Discipline!"

Chow Lai Ting
CUHK – Nursing

LKPFC has taught me a lot through the years but one thing sticks. Discipline plays an indispensable role in achieving success. When tackling challenging tasks, I visualized my short-term and long-term goals and I set clear plans to accomplish them. Striving to stick the plans, I removed temptations around me. All these I learnt proved to be vital to my success in HKDSE.



"Strive for Excellence!"

Tai Wing Yan
CUHK - Chinese Language and Literature

Our teachers' tireless efforts in teaching us are something I will always appreciate and be thankful of. Our teachers had high hopes for our success and they made us realize our potentials. All of their hard work paid off as I was pushed to be the best version of myself. I strove for excellence because my teachers first believed in me.



"Passion and Inspiration!"

Chen Sze Shuen
HKU – Bachelor of Arts and Bachelor of Education in Language Education – English (Double Degree)

Our cohort was an unprecedented one as we dealt with a global pandemic. Sometimes it felt like an uphill battle but our teachers' unrelenting support in our education was what made the lessons enjoyable and effective. Their passion in teaching English has inspired me to pursue English Education in university.



"Perseverance!"

Yu Cheung Fei
CUHK - Computer Science and Engineering

Our school emphasizes the significance of self-directed learning and I benefited from it. It is of paramount importance to set goals, plans and execute the said plans. Difficult as it was, I always knew being perseverant was the key to my triumphs in HKDSE.



Aim high



Address : 102 Tsui Ping Road, Kwun Tong, Kowloon.

Tel: (+852) 2348 0103 Fax: (+852) 2340 9716

Email : info@lkpfc.edu.hk

Website : <http://www.lkpfc.edu.hk>